



# SHELTERS



## CONTAINERS SOLUTIONS

Impasse Louis Blériot, PA de la Guerche, 44250 Saint-Brevin les pins

[www.shelters-solutions.com](http://www.shelters-solutions.com)

Phone: +33 698 721 937 // +33 604 190 553 E-mail: [contact@shelter-solution.fr](mailto:contact@shelter-solution.fr)

# Containers Solutions

In order to propose **you** the best product, our **industrial approach** combines an interesting price, skills, moral commitment and, of course, good quality.

Both experience and know-how of our factory, in the production of technical shelters, are well-known. In this way, we focus our production process on the product **quality**.

Thus, you can get a solution with the best **QUALITY/PRICE** ratio on the international market !

## OUR PHILOSOPHY : SOLUTIONS ADAPTED TO YOUR NEEDS !



# Flat-pack shelters

Thanks to an entirely centralized production, our factory, which can produce from 100 to 200 shelters per month, gets an acknowledged expertise in production of high technology products (electric shelters, solar, telecom...)

Moreover, the immediate proximity of a large international port, allows us to assert our vocation to export.



Developed and produced to last **at least 20 years**, thanks to its completely galvanized structure and to a strengthened waterproofness of the roof through a TPO membrane (equivalent of swimming pool liner pipe).

The **field of application** of our shelters is **huge**, especially because they are **made to measure** according to your needs: choice of dimensions, strength, floor type, insulation, electricity (air-conditioning, lighting, cabling structure...)

Finally, with a **really quick assembly** that does not requires many things, this solution is **a lot more economic** than the transformed maritime container.

Please take note that we can deliver your unit already **built**.

# Kit delivery

**Our concept allows us to deliver a maximum of flat-pack shelters by sea or by road.**



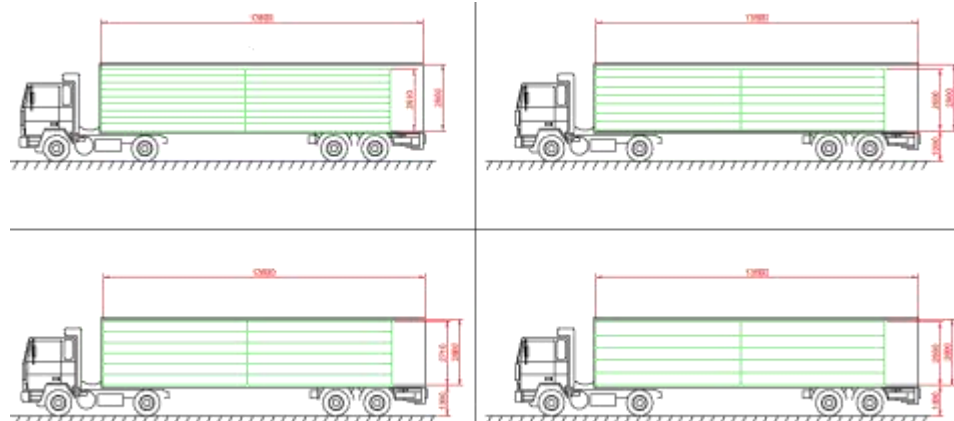
Until 8 shelters of 5.6 meters in 1 40' Open Top container



Until 12 6-meter-shelters in 1 truck

The choice of the insulating panel thickness has an incidence on the number of shelters that can be transported. \*

40 mm → 12 per truck  
60 mm → 8 per truck  
80 mm → 6 per truck  
100 mm → 4 per truck



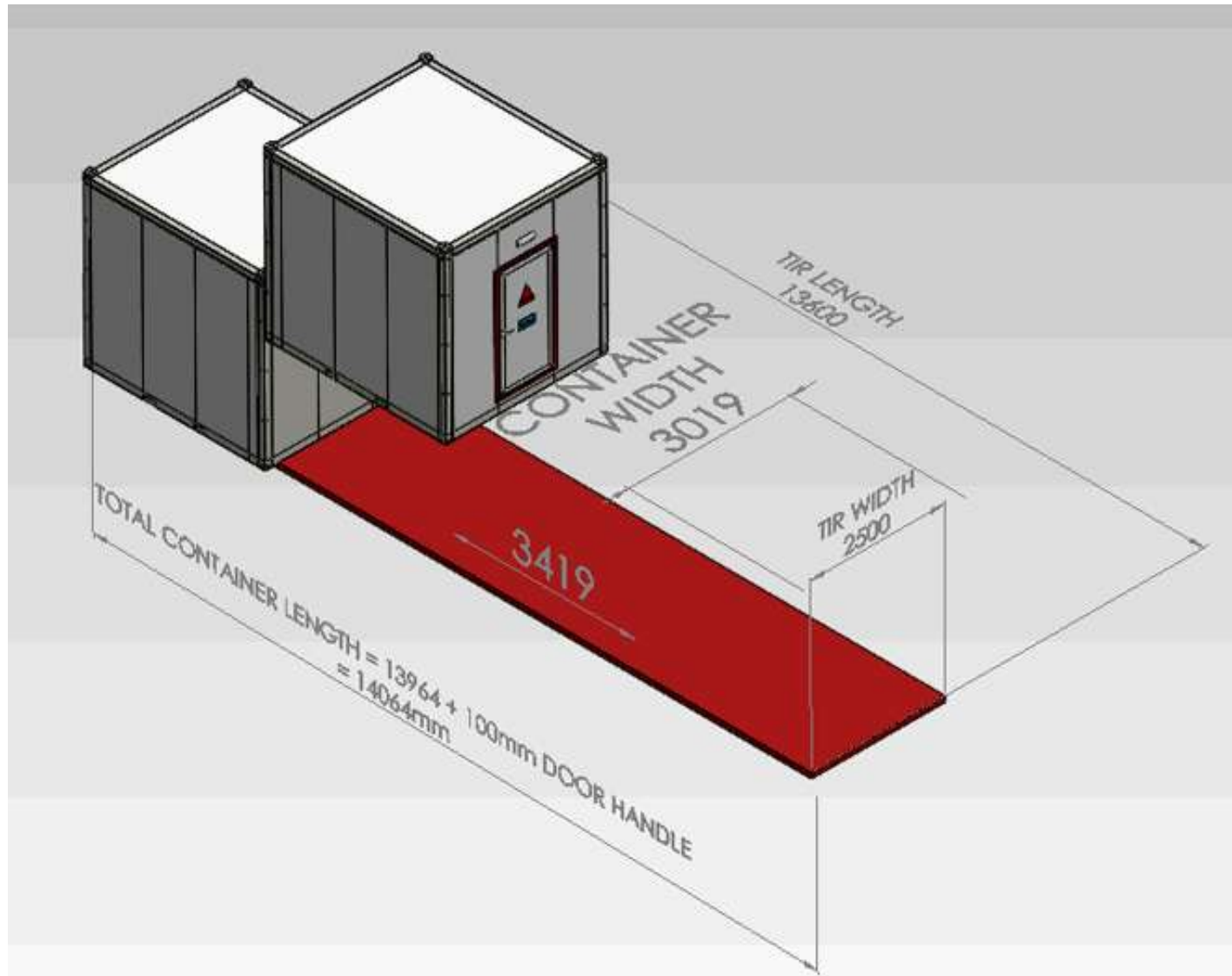
*\*Depending on the size*

If you need an estimate or more information:

Find us on our website: [www.shelters-solutions.com](http://www.shelters-solutions.com)

Or Contact us by phone: **+33 698 721 937 // +33 604 190 553** or by e-mail: [contact@shelter-solution.fr](mailto:contact@shelter-solution.fr)

# Volume delivery



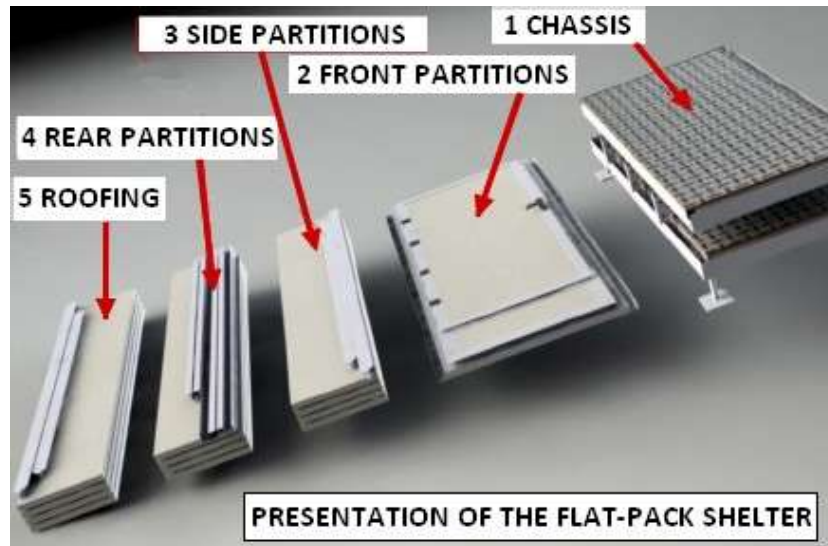
If you need an estimate or more information:

Find us on our website: [www.shelters-solutions.com](http://www.shelters-solutions.com)

Or Contact us by phone: +33 698 721 937 // +33 604 190 553 or by e-mail: [contact@shelter-solution.fr](mailto:contact@shelter-solution.fr)

# Assembly

Easy assembly which does not need special skills. Only a crane or a forklift truck is necessary to put the roof on.



If necessary, we can provide you rollers to manually install the roof.



If you need an estimate or more information:

Find us on our website: [www.shelters-solutions.com](http://www.shelters-solutions.com)

Or Contact us by phone: +33 698 721 937 // +33 604 190 553 or by e-mail: [contact@shelter-solution.fr](mailto:contact@shelter-solution.fr)



# Combined shelters

**Our solutions also permit to realize your locale or your technical shelter in big size.**

To have a little factory or a huge technical place exportable all over the world is not a problem anymore.



Our past experience about the modular allows us to have total control of the assembly and the waterproofness in a perfect way. We propose the help of a supervisor in order to assist you putting together your technical project.

If you need an estimate or more information:  
Find us on our website: [www.shelters-solutions.com](http://www.shelters-solutions.com)  
Or Contact us by phone: **+33 698 721 937** // **+33 604 190 553** or by e-mail: [contact@shelter-solution.fr](mailto:contact@shelter-solution.fr)

# Field of applications

**GSM**  
**Data room**  
**Technical room**  
**Inverter room**  
**Storage of IT goods**  
**Blower room**  
**And any other technical use...**



If you need an estimate or more information:

Find us on our website: [www.shelters-solutions.com](http://www.shelters-solutions.com)

Or Contact us by phone: **+33 698 721 937** // **+33 604 190 553** or by e-mail: [contact@shelter-solution.fr](mailto:contact@shelter-solution.fr)



# Features

Common Specs	Dimensions	Any Size
	Product Type	Shelter / Seperation
	Shelter Type	Demounted / Mounted
	Lifting From	Down / Up / Both
	Outside temp range	.-5 deg to +55 deg C
	Humidity	100%
	Protection	From direct solar radiation
	Wind speed resistance	160km/hr
	Resistant to	rain, dust, wind, sand
	High permeability coefficient	0.5 W/m2k
	Inside Temp range	18 to 22 deg C
	Design Life	10 years
Side Walls	Panel Thickness	40mm / 60mm / 80mm / 100mm
	Panel Insulation	Polyurethane (B2 Class) / Rockwool
	Polyurethane Density	40kg/m3 / Optional
	Colour	RAL7035 / RAL9002 / Any Colour
	Surface Covering Inner	0.50mm/0.55mm/0.60mm/0.90mm 5μ of primer, 20μ of top coat on top side - 7μ of service coat on back side
	Surface Covering Outer	0.50mm/0.55mm/0.60mm/0.90mm 5μ of primer, 20μ of top coat on top side - 7μ of service coat on back side
	Method of Painting	Coil Coating / Plastisol Sheet Covering

If you need an estimate or more information:

Find us on our website: [www.shelters-solutions.com](http://www.shelters-solutions.com)

Or Contact us by phone: **+33 698 721 937 // +33 604 190 553** or by e-mail: [contact@shelter-solution.fr](mailto:contact@shelter-solution.fr)

# Features

Roof	Panel Thickness	40mm / 60mm / 80mm / 100mm
	Isolation Material	TPO Membrane
	Trapezoid Roof	Yes / No
	Slope	Yes / No (Optional size)
	Panel Insulation	Polyurethane (B2 Class) / Rockwool
	Polyurethane Density	40kg/m3 / Optional
	Colour	RAL7035 / RAL9002 / Any Colour
	Surface Covering Inner	0.50mm/0.55mm/0.60mm/0.90mm
	Surface Covering Outer	5μ of primer, 20μ of top coat on top side - 7μ of service coat on back side
	Method of Painting	Coil Coating
Chassis	Loading Capacity	Optional (Usually 200kg/m2)
	Insulation	Yes / No
	Insulation with Panel	Yes / No
	Insulation Thickness	Optional (Usually 90mm)
	Base Frame	Hot Dip Galvanized
	Floor Downside Material	Plywood (18mm)
	Floor Upperside Material	Antistatistical Vinyl (2mm)
	Colour	RAL7035 / RAL9002 / Any Colour
	Forklift Legs	Yes / No
	Supporting Feet	Yes / No (Optional size)
	Method of Painting	Polyster Coating / Plastisol Coated Metal Sheet Cover over HDG
	Paint Thickness	60μ
	Loading Capacity	Optional (Usually 1.200kg/m2)

If you need an estimate or more information:

Find us on our website: [www.shelters-solutions.com](http://www.shelters-solutions.com)

Or Contact us by phone: **+33 698 721 937 // +33 604 190 553** or by e-mail: [contact@shelter-solution.fr](mailto:contact@shelter-solution.fr)

# Options

	Standard	Available
Antistatistical Vinyl	x	
Plywood	x	
Door	x	
Door Barrel	x	
Door Handle	x	
Door Lock	x	
Door Seal	x	
Door Stopper	x	
Gap Closer Rubber (For Carrier Profiles)	x	
Rain Gutter	x	
TPO Membrane	x	
Trapeze Sheet	x	
Adjustable feet		x
Document Box		x
External Light		x
Foldable Table		x
Forklift Legs		x
Galvanized Entrance Step		x
Internal Light		x
Motion Sensor		x
Power Socket (IP54)		x
Power Switch (IP54)		x
TTR Cable		x
Cable Conduit		x
A/C Controller		x
Alluminium Inlet Filtered Window		x
Anti Panic Door Handle		x
Cable Ladder		x
Cable Ladder Apparatus		x

If you need an estimate or more information:

Find us on our website: [www.shelters-solutions.com](http://www.shelters-solutions.com)

Or Contact us by phone: **+33 698 721 937 // +33 604 190 553** or by e-mail: [contact@shelter-solution.fr](mailto:contact@shelter-solution.fr)

# Options

Copper Bar		x
Copper Manifold		x
Copper Ring		x
Isolator for copper ring		x
C-Ray		x
L Type Connection Part (for C-Ray)		x
Sliding Support for C-Ray		x
Emergency Light		x
English Type Power Plug		x
External Ladder		x
Fire Alarm Cable		x
Fire Extinguisher		x
First Aid Kit		x
Free Cooling Unit		x
Grounding Cable (25mm2)		x
Hole Cover (any type and size)		x
Hydraulic Door Arm		x
ID Plate		x
Internal Ladder		x
Label		x
Magnetical Door Contact		x
Mechanical Door Contact		x
Mortises		x
Pipe for A/C Hole		x
Roxtec		x
Roxtec Internal Frame		x
Smoke Detector		x
Split A/C		x
Steel Chair		x
Steel Wire		x
Warning Plate		x

If you need an estimate or more information:

Find us on our website: [www.shelters-solutions.com](http://www.shelters-solutions.com)

Or Contact us by phone: **+33 698 721 937 // +33 604 190 553** or by e-mail: [contact@shelter-solution.fr](mailto:contact@shelter-solution.fr)

# Options

ITEM	PHOTO	ITEM	PHOTO
GALVANIZED ENTRANCE STEP		DOOR LOCK DOOR HANDLE	
MEMBRANE ON ROOF		LADDER 1	
CABLE LADDER		LADDER 2	
INTERNAL LIGHTING 2X18W		IP54 POWER SWITCH & PLUG	

If you need an estimate or more information:

Find us on our website: [www.shelters-solutions.com](http://www.shelters-solutions.com)

Or Contact us by phone: **+33 698 721 937 // +33 604 190 553** or by e-mail: [contact@shelter-solution.fr](mailto:contact@shelter-solution.fr)



# Options

ITEM	PHOTO	ITEM	PHOTO
ITO ANTI PANIC DOOR HANDLE		DOCUMENT BOX & TABLE	
KALE HYDRAULIC DOOR ARM		MECHANICAL DOOR ALARM	
IP54 EXTERNAL LIGHTING		IP54 MOTION SENSOR	
DOOR STOPPER		ID PLATE	

If you need an estimate or more information:

Find us on our website: [www.shelters-solutions.com](http://www.shelters-solutions.com)

Or Contact us by phone: **+33 698 721 937 // +33 604 190 553** or by e-mail: [contact@shelter-solution.fr](mailto:contact@shelter-solution.fr)

# Options

ITEM	PHOTO	ITEM	PHOTO
ALLUMINIUM INLET FILTERED WINDOW		COPPER BAR	
RAIN GUTTER ROKTEC COVER		MAGNETICAL DOOR ALARM	
ALARM SYSTEM		POLE CONNECTION KIT	
5 POLAR 3 PHASE IP54 EMERGENCY POWER SOCKET		CONDUIT BOX	

If you need an estimate or more information:

Find us on our website: [www.shelters-solutions.com](http://www.shelters-solutions.com)

Or Contact us by phone: +33 698 721 937 // +33 604 190 553 or by e-mail: [contact@shelter-solution.fr](mailto:contact@shelter-solution.fr)

# Options

ITEM	PHOTO	ITEM	PHOTO
TRISPEZOID ROOF		FIRE EXTINGUISHER	
EMERGENCY LIGHTING		C-RAY	
DOOR INSULATION		INTERNAL LIGHT WITH 48V LAMP	
COPPER RING CABLE LADDER		COPPER RING	

If you need an estimate or more information:

Find us on our website: [www.shelters-solutions.com](http://www.shelters-solutions.com)

Or Contact us by phone: +33 698 721 937 // +33 604 190 553 or by e-mail: [contact@shelter-solution.fr](mailto:contact@shelter-solution.fr)

# Options

ITEM	PHOTO	ITEM	PHOTO
ROXTEC SEALING SYSTEM		ISOLATOR COPPER RING CONNECTION PIECE	
KIT FOR POLE INSTALLATION ON ROOF		ADJUSTABLE FOOT GAP CLOSER SEAL	
CABLE ENTRY GLAND		LABELS	
ROXTEC HOLE COVER		LIFTING FROM TOP KIT FOR DEMOUNTABLE UNITS	

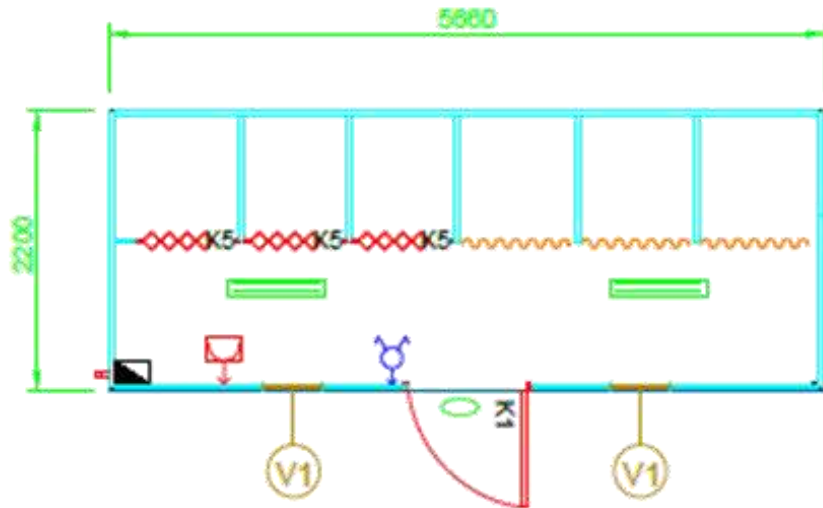
If you need an estimate or more information:

Find us on our website: [www.shelters-solutions.com](http://www.shelters-solutions.com)

Or Contact us by phone: **+33 698 721 937 // +33 604 190 553** or by e-mail: [contact@shelter-solution.fr](mailto:contact@shelter-solution.fr)

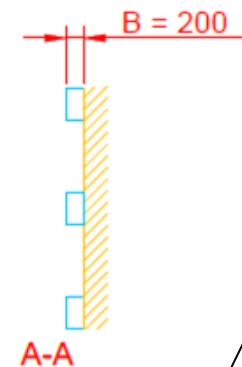
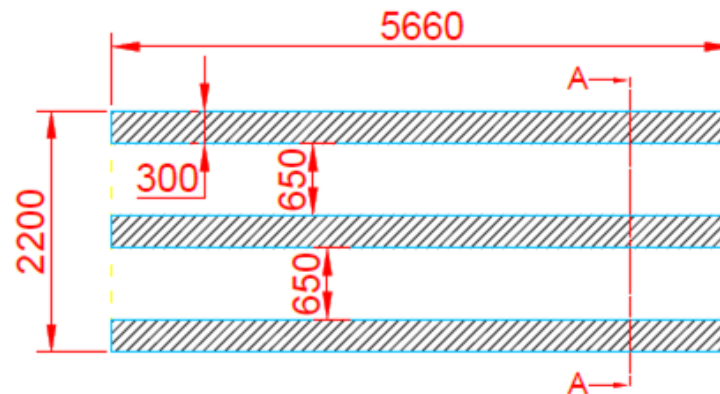
# Plans

With the order, we provide you, on demand, both foundations and electrical plans.



**Electricity (discharge chute)**

**Foundations plans**



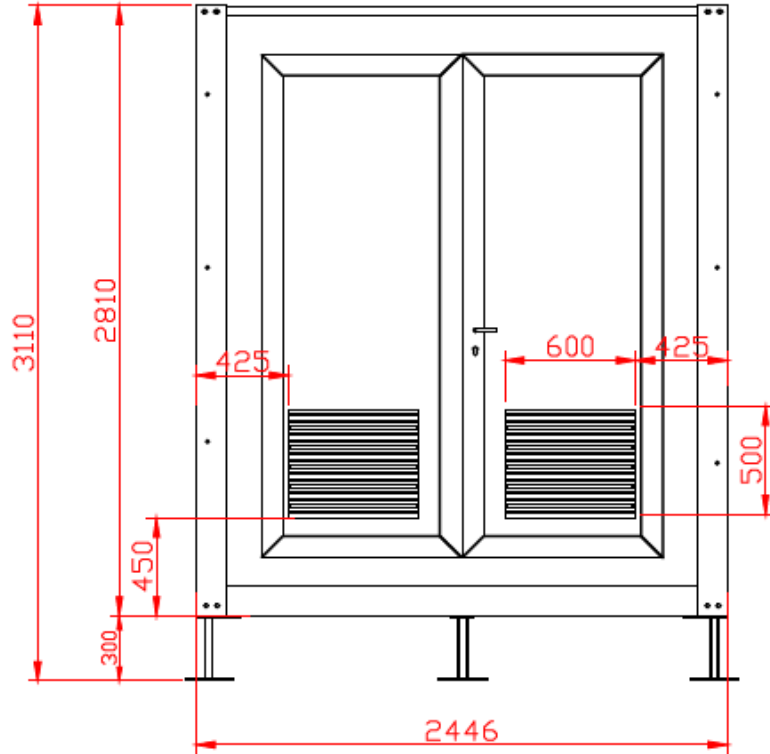
If you need an estimate or more information:

Find us on our website: [www.shelters-solutions.com](http://www.shelters-solutions.com)

Or Contact us by phone: +33 698 721 937 // +33 604 190 553 or by e-mail: [contact@shelter-solution.fr](mailto:contact@shelter-solution.fr)

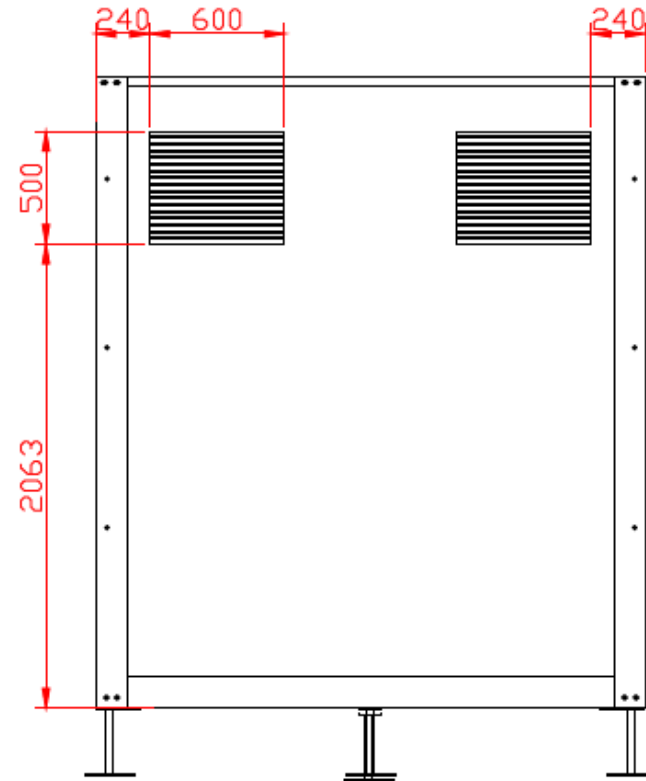


# Examples of plans



Front view with double entrance door and vertical ventilation grilles

Back view with vertical ventilation grilles

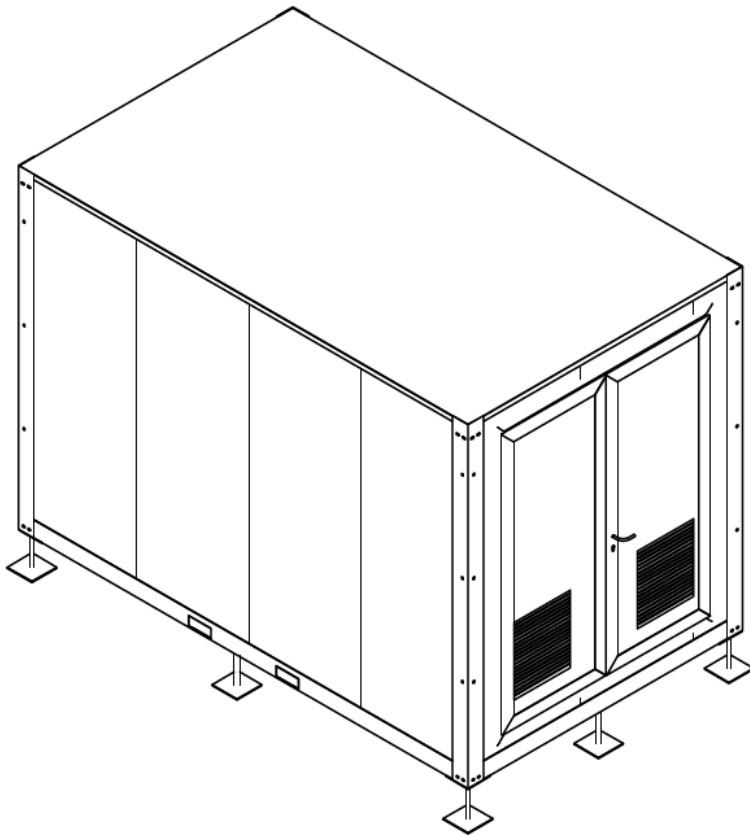


If you need an estimate or more information:

Find us on our website: [www.shelters-solutions.com](http://www.shelters-solutions.com)

Or Contact us by phone: +33 698 721 937 // +33 604 190 553 or by e-mail: [contact@shelter-solution.fr](mailto:contact@shelter-solution.fr)

# Examples of plans



If you need an estimate or more information:

Find us on our website: [www.shelters-solutions.com](http://www.shelters-solutions.com)

Or Contact us by phone: **+33 698 721 937 // +33 604 190 553** or by e-mail: [contact@shelter-solution.fr](mailto:contact@shelter-solution.fr)

# Examples of plans



A few 3D views



If you need an estimate or more information:

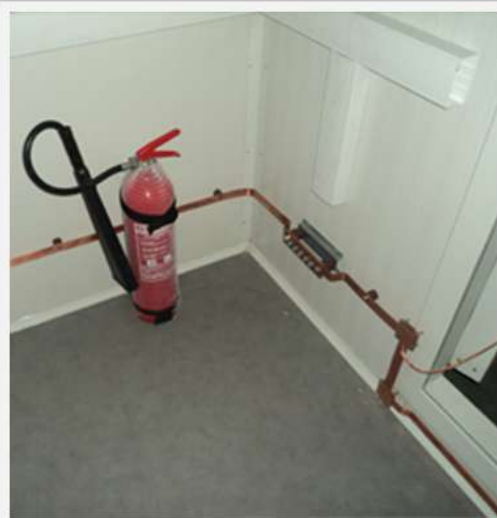
Find us on our website: [www.shelters-solutions.com](http://www.shelters-solutions.com)

Or Contact us by phone: **+33 698 721 937 // +33 604 190 553** or by e-mail: [contact@shelter-solution.fr](mailto:contact@shelter-solution.fr)

# Pictures



# Pictures



If you need an estimate or more information:  
Find us on our website: [www.shelters-solutions.com](http://www.shelters-solutions.com)  
Or Contact us by phone: **+33 698 721 937 // +33 604 190 553** or by e-mail: [contact@shelter-solution.fr](mailto:contact@shelter-solution.fr)



# Some references



*It is because your project is essential for you, that we will assist you, not as a simple service provider but as a true partner !*

*Therefore, we propose you a simple, competitive and reliable concept on the international market, customized to fit your needs.*

*Do not hesitate to visit our website :*

**[www.shelters-solutions.com](http://www.shelters-solutions.com)**

**And to Contact us by phone +33 698 721 937 // +33 604 190 553**

**Or by e-mail [contact@shelter-solution.fr](mailto:contact@shelter-solution.fr)**

*Containers Solutions Group*