



WORKERS CAMP SOLUTION



CONTAINERS SOLUTIONS

Impasse Louis Blériot, P.A. de la Guerche, 44250 Saint-Brevin les Pins - France

www.container-solution.com

Tel: +33 698 721 937 // +33 604 190 553 mail: contact@container-solution.com

Containers Solutions

In order to propose **you** the best product, our **industrial approach** combines an interesting price, skills, moral commitment and, of course, good quality.

Both experience and know-how of our factory, in the production of workers camp, are well-known. In this way, we focus our production process on the product **quality**.

Thus, you can get a solution with the best **QUALITY/PRICE** ratio on the international market !



OUR PHILOSOPHY :
SOLUTIONS ADAPTED TO YOUR NEEDS !

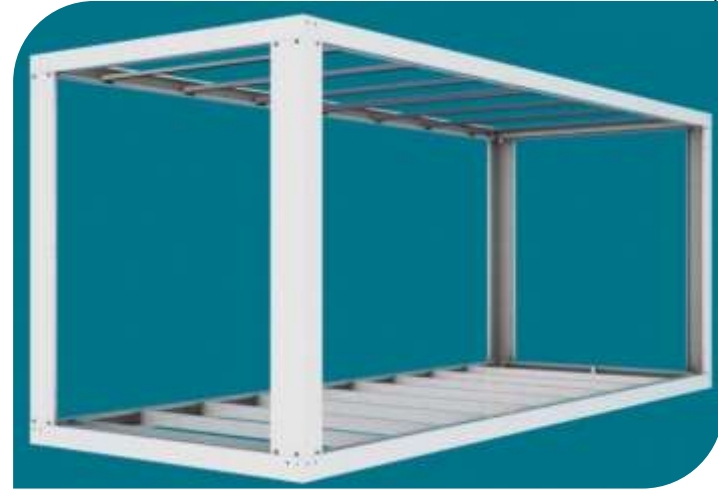


Principle

Packaged solutions to achieve offices, toilets, dormitories or living camps from a few dozen square meters to several hundreds square meters.

Each module consists of a metal structure (bottom frame, roof and columns at the four corners) and sandwich panels with a core of high density polyurethane foam. Windows and doors are installed during assembly the containers.

The assembly consists in attaching (bolting) the columns on the chassis, and to install the roof panels and finally the walls.



The modules have also the property of being **connectable and stackable** (R+1) to each other. You can create larger areas. It's really easy, you just do not install the side wall connecting the modules together.

Moreover, you can transform your module in a **sanitary room**. In this case, items such as shower, toilet, sink, faucet come apart, you just have to ride them.

Containers Solutions : the Most Diversity

• Models

We have many standard models, however, you are free to customize them in order to fit closer to your expectations.

- Length
- Width
- Doors, windows, partitions

Each project is unique, create yours according to your needs!



We can also produce modules adapted to **wet climates** like tropical type with:

- A structure completely in **galvanized steel** for corrosion protection,
- Flooring: **rot-resistant phenolic plywood or cement chipboard**
- Equipped with a flat roof Trapezoidal 0.6 mm thick attached to the profiles with screws and rings watertight

Need a quote or information ?

Find us on www.container-solution.com

Or call us at +33 (0)6 98 72 19 37 // +33 (0)6 04 19 05 53 or by email at contact@container-solution.com

Containers Solutions : the Most Modularity

All modular custom made according to your requirements and specifications !



Need a quote or information ?

Find us on www.container-solution.com

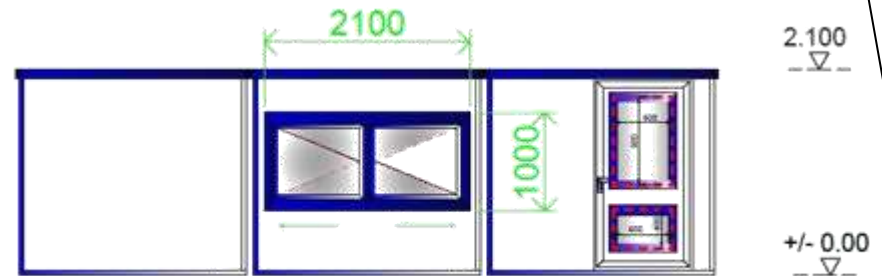
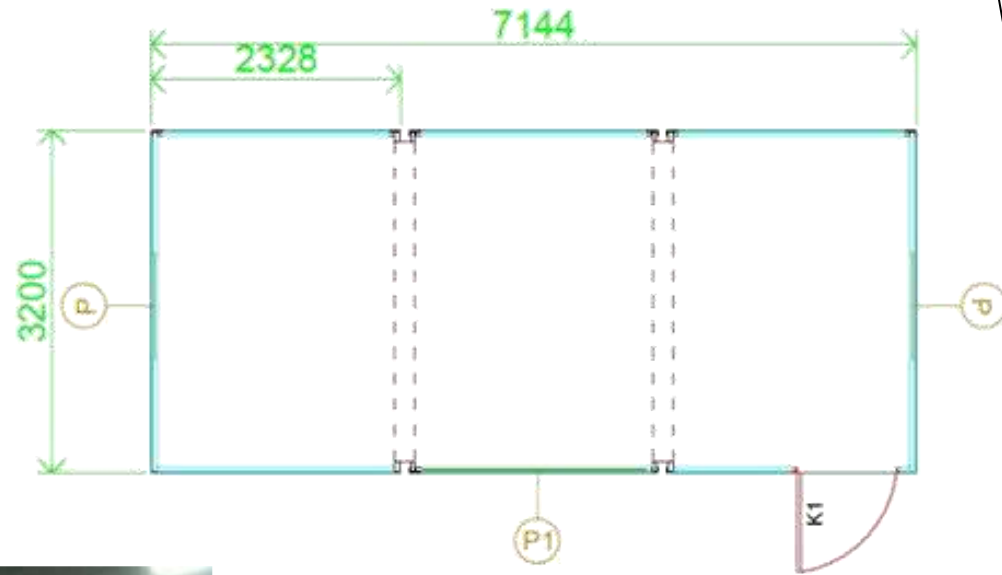
Or call us at +33 (0)6 98 72 19 37 // +33 (0)6 04 19 05 53 or by email at contact@container-solution.com

Containers Solutions : the Most Modularity

To meet the technical features of this project we had to make this module into 3 parts and without bottom frame.

Walls are mounting on specific rails.

Large sliding window and fully glazed PVC door.



Containers Solutions : the Most Capacity & reactivity

• In production time

With our control of the entire production process by the manufacturing of sandwich panels and integration of the design office, our European factory has **certification ISO 9001 and our products are CE certified**

With a production capacity of about **500 modules per month**, it takes roughly **4 weeks** for manufacturing your order (depending on the quantity).

This is why we can offer competitive products on the international market.



• In the delivery

Our close proximity to an **international port**, allows us to deliver our products all around the world.

Our references in **over 50 countries** attest our qualifications, our management and our products

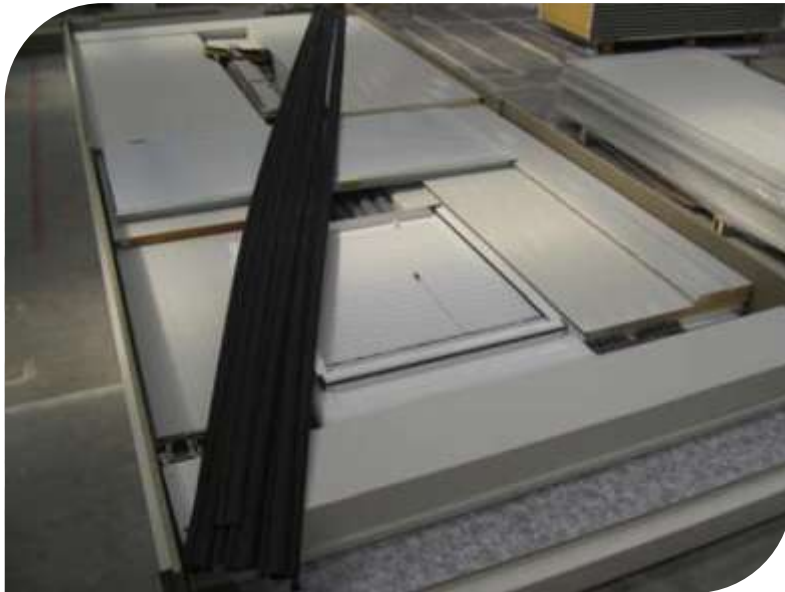
Need a quote or information ?

Find us on www.container-solution.com

Or call us at +33 (0)6 98 72 19 37 // +33 (0)6 04 19 05 53 or by email at contact@container-solution.com

Containers Solutions : the Most Supports

For us, realize your project in the best conditions is essential. That is why we want to support you as we can. Indeed, Containers Solutions:



- **We do not like bad surprises**

Everything that makes up our modules is provided (except furniture), the module itself, but also all the interior equipment needed: electricity and plumbing.

- **We want our products to arrive safe and sound**

You no longer have to worry about anything, we organize and ensure the **CIF** (cost, insurance and freight) at the nearest port of your project.



Containers Solutions : the Most Supports

● We do not like when it's complicated

For mounting your modular with confidence we provide you with a **detailed assembly instructions** and we suggest **supervisors assistance*** (English/French speaker) to guide you.

A **mounting kit / finishes** is provided to you. It includes all the elements required for assembly:

- Screw
- Bolts / Nuts
- Silicone
- Connection profiles
- PEX tubing
- Electric kit (cables, light, sockets, switches,)
-

**Possibility of delivering
a tools kit**



**On quote*

Need a quote or information ?

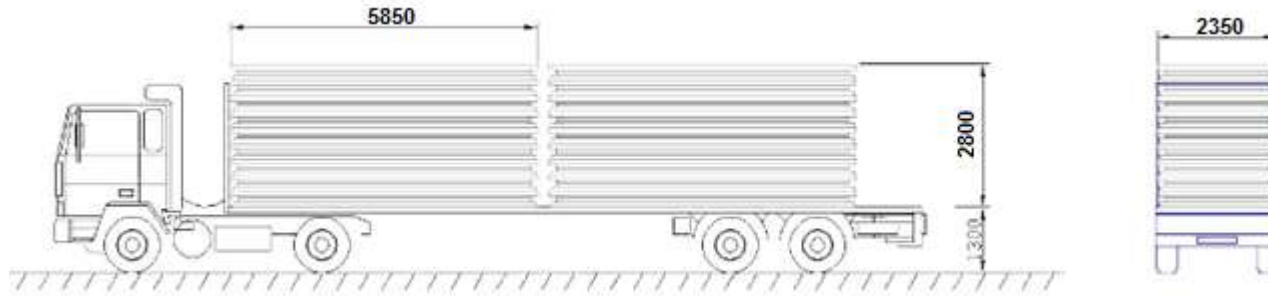
Find us on www.container-solution.com

Or call us at +33 (0)6 98 72 19 37 // +33 (0)6 04 19 05 53 or by email at contact@container-solution.com

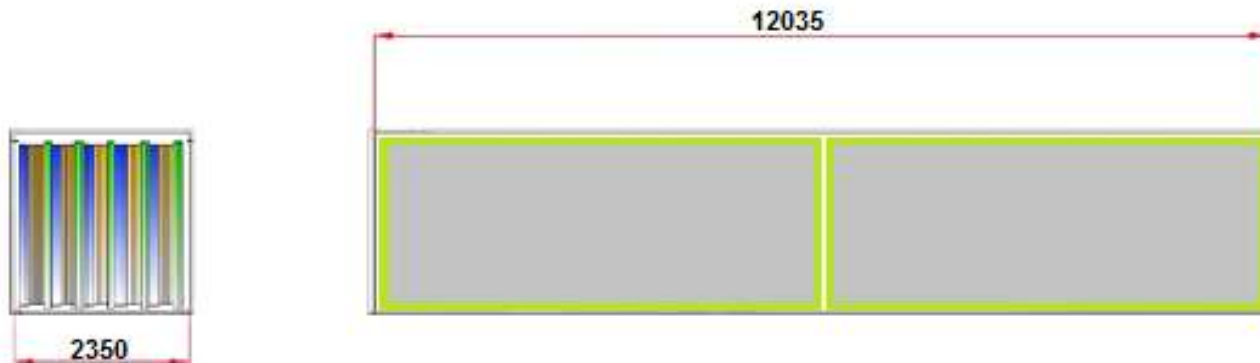
Containers Solutions : the Most Logistics

UNIQUE SOLUTION ON THE INTERNATIONAL MARKET !!!

Our concept allows to deliver a maximum of modules by boat or truck



UNTIL 10 MODULES ON THE SAME TRUCK



UNTIL 10 MODULES IN ONE SEA CONTAINER

Need a quote or information ?

Find us on www.container-solution.com

Or call us at +33 (0)6 98 72 19 37 // +33 (0)6 04 19 05 53 or by email at contact@container-solution.com

Containers Solutions : the Most Logistics



The two piles of 5 modules are strapped for a trip in the best conditions.

We use 40 feet shipping containers "HIGH CUBE".



Rolling board to load/unload the modules in the 40' HC

Need a quote or information ?

Find us on www.container-solution.com

Or call us at +33 (0)6 98 72 19 37 // +33 (0)6 04 19 05 53 or by email at contact@container-solution.com

Features

BASIC FRAME

It is formed by profiles of 2 mm thick galvanized steel. Formed transversely Omega profiles in galvanized steel. The floor load capacity 250 kg / m².

Wooden chipboard panels for the floor (optional phenolic plywood panels or cement chipboard) Bolted on the structure

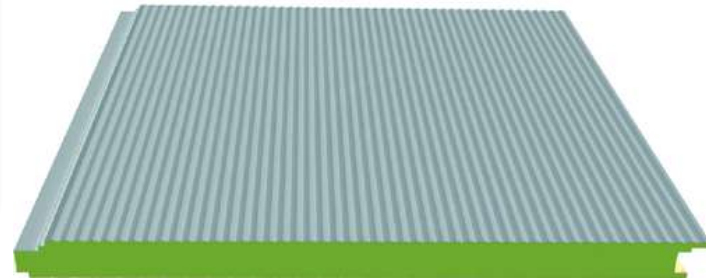
STANDARDS

- Certified ISO 9001 version 2000



WALLS

The walls are made of sandwich panels of 40 mm thickness, composed on both sides of galvanized steel sheet 4/10 with white prelacquer and a thermally and acoustically insulation made of polyurethane foam injected with a density 40 kg / m³ ($\pm 10\%$). This type of panel has a coefficient of thermal conductivity $\lambda = 0.021$ W/mK. These panels are highly resistant to moisture, being practically unalterable over time.



ROOF STRUCTURE

It is formed by galvanized steel profiles 2 mm thick. Formed transversely Omega profiles in galvanized steel. These omega support the steel sheets of 0.6 mm thick fixed to the profiles with screws and waterproof rings.

ACOUSTICAL CEILING

The acoustical ceiling is formed by steel galvanized sheet 0,5 mm thick pre painted white Pyrenees. Between the ceiling and the roof sheet, insulation 80 mm of glass wool with vapor barrier.

Indoor module height: 2275 mm.

Need a quote or information ?

Find us on www.container-solution.com

Or call us at +33 (0)6 98 72 19 37 // +33 (0)6 04 19 05 53 or by email at contact@container-solution.com

Feature

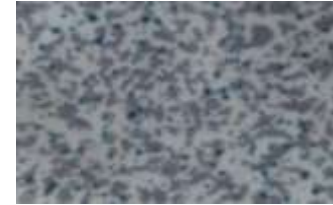
As standard, our modules are not equipped with convector and hot water tank

FLOOR

Chipboard panel

PVC flooring

- Linoleum model Traviata 3028
- Colors gray, green and brown at the choice



WINDOWS

- White PVC window consists of two sliding panels of 975x1045 mm single glazing of 4mm
- Sanitary: white PVC Window 500x500 mm 4mm single translucent glazing

In Option

- Double glazing
- Roller shutter
- Bars



DOORS

- Exterior and interior door in white painted aluminum profiles. Isolated with Polystyrene
- Dimension: 975x2060 mm with handle and lock



Need a quote or information ?

Find us on www.container-solution.com

Or call us at +33 (0)6 98 72 19 37 // +33 (0)6 04 19 05 53 or by email at contact@container-solution.com

Features

SANITATION (ROCA type)

- 2) Washbassin + tap
- 3) Shower tray + tap
- 4) WC
- 5) Mirror
- 6) Kitchenette in Optionl

- water supply pipes PER
- Drains wastewater PVC



FLOOR

Possibility flooring in cement chipboard, phenolic plywood or aluminum riffled sheet



Need a quote or information ?

Find us on www.container-solution.com

Or call us at +33 (0)6 98 72 19 37 // +33 (0)6 04 19 05 53 or by email at contact@container-solution.com

Features

ELECTRICITY

Electrical installation complies with European standards.

Electrical panel with differential protections.

Electrical installation 220V / 50Hz.

- Waterproof light with diffuser 2x36W
- Waterproof light with diffuser 2x18W
- Sockets 16A + TT (in the toilet, they will be damp proof)
- 10A Switches + TT



IN OPTION

-Air conditioning system

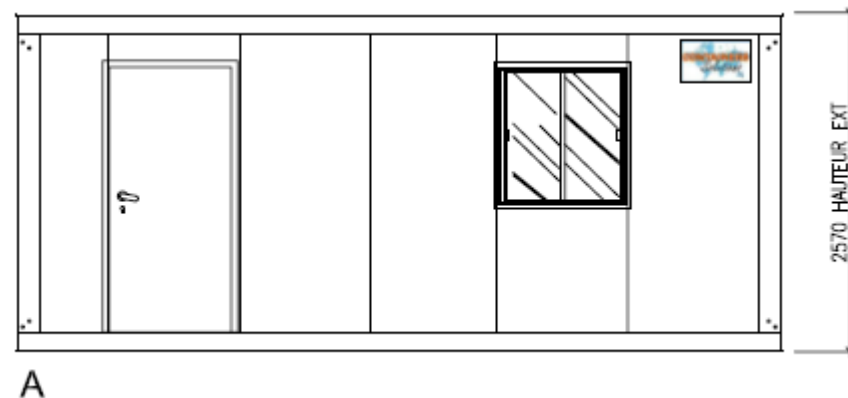
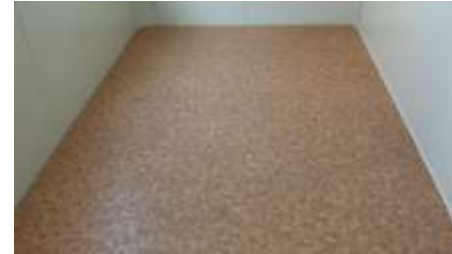
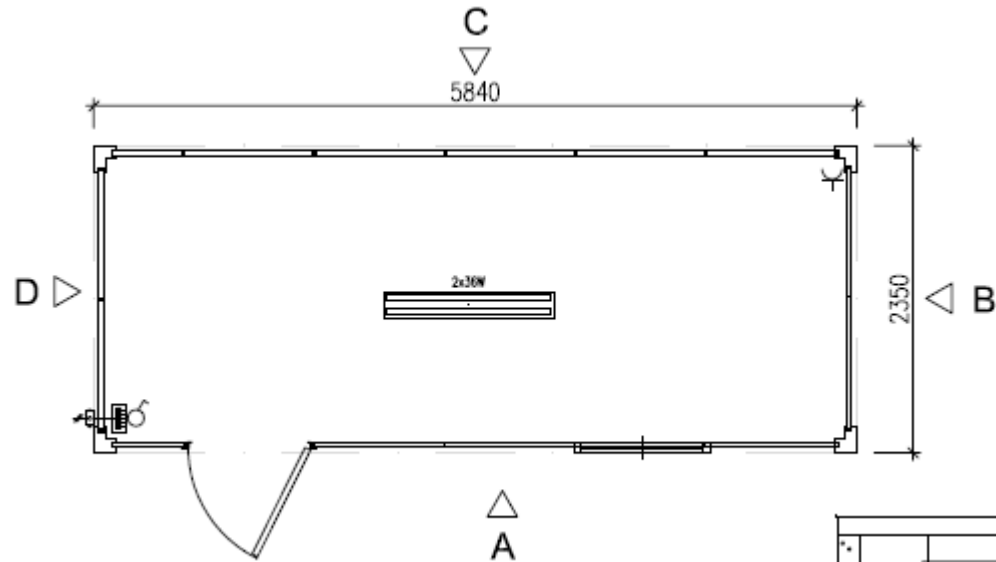
Need a quote or information ?

Find us on www.container-solution.com

Or call us at +33 (0)6 98 72 19 37 // +33 (0)6 04 19 05 53 or by email at contact@container-solution.com

Standard plans

BV1



Specifications:

1 door
1 interior light
1 socket

1 window
1 fuse box
1 switch

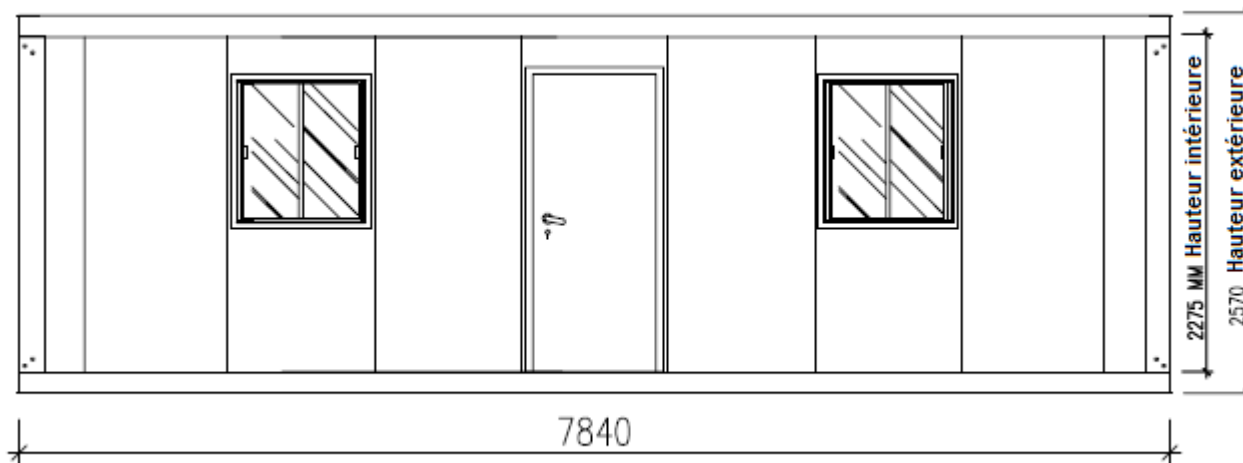
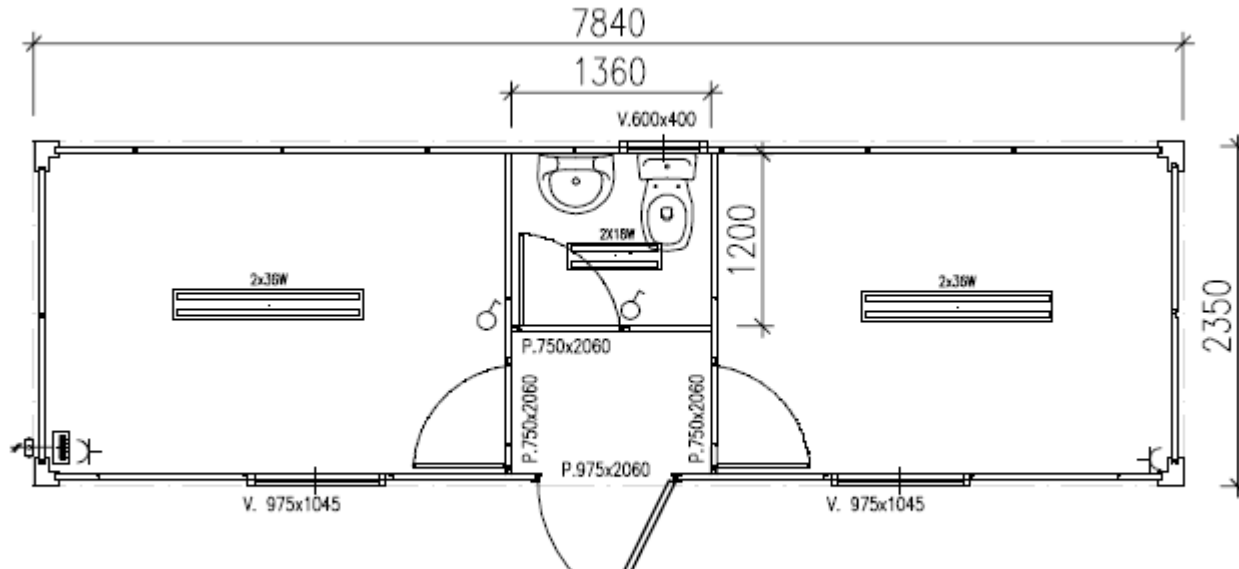
Need a quote or information ?

Find us on www.container-solution.com

Or call us at +33 (0)6 98 72 19 37 // +33 (0)6 04 19 05 53 or by email at contact@container-solution.com

Standard plans

BV2



Specifications:

- 3 doors
- 3 windows
- 1 partition
- 3 interior lights
- 2 sockets
- 1 fuse box
- 1wc
- 1 washstand

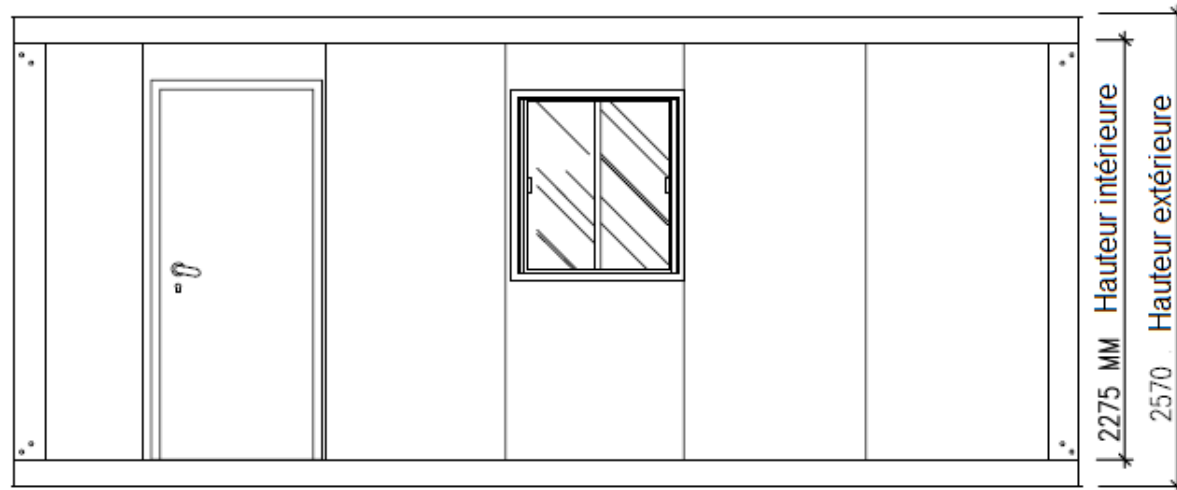
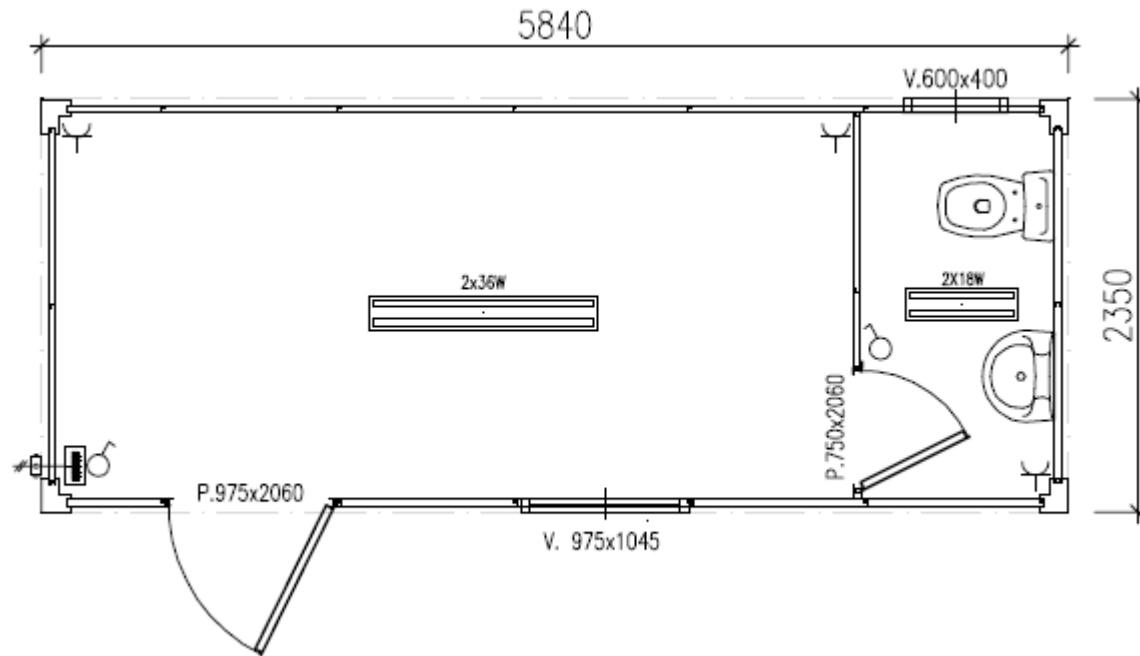
Need a quote or information ?

Find us on www.container-solution.com

Or call us at +33 (0)6 98 72 19 37 // +33 (0)6 04 19 05 53 or by email at contact@container-solution.com

Standard plans

BV3



Specifications:

- 2 doors
- 2 windows
- 3 sockets
- 2 interior lights
- 1 fuse box
- 2 switches
- 1 washstand
- 1 WC

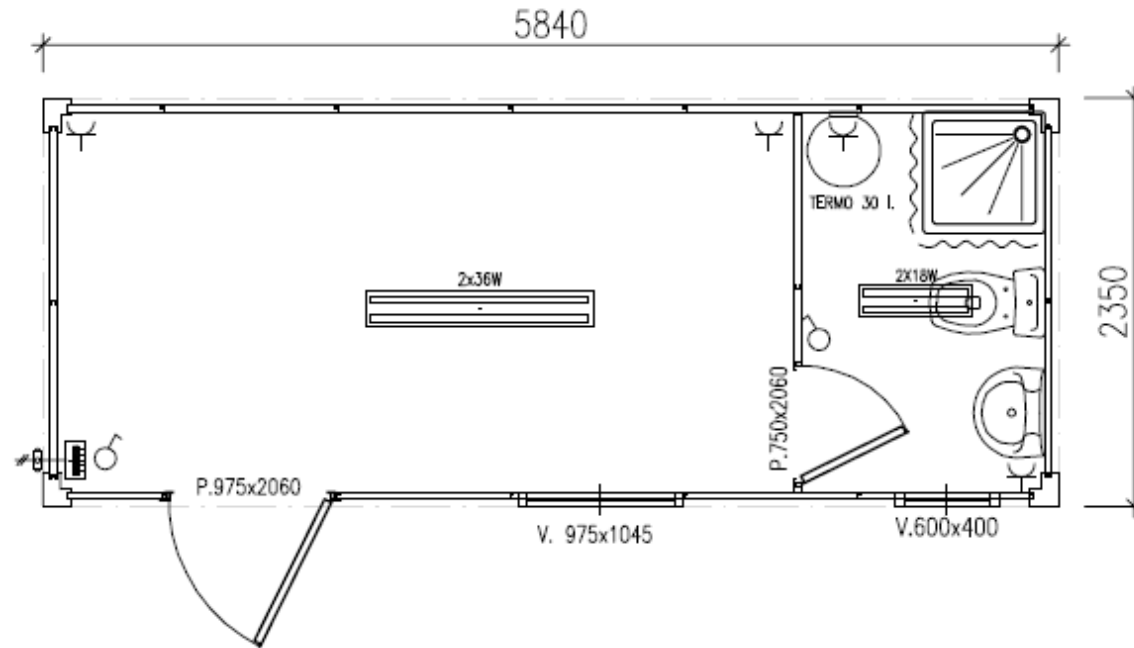
Need a quote or information ?

Find us on www.container-solution.com

Or call us at +33 (0)6 98 72 19 37 // +33 (0)6 04 19 05 53 or by email at contact@container-solution.com

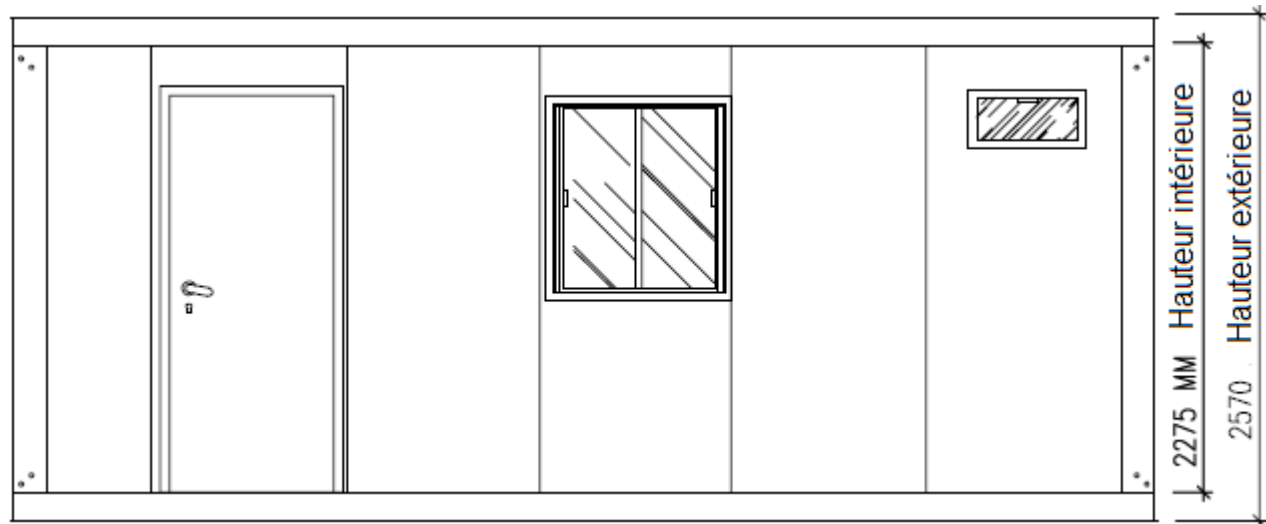
Standard plans

BV4



Spécifications:

- 2 doors
- 2 windows
- 1 shower
- 1 washstand
- 1 WC
- 2 interior lights
- 3 sockets
- 1 fuse box
- 2 switches
- 1 hot water tank 30 L



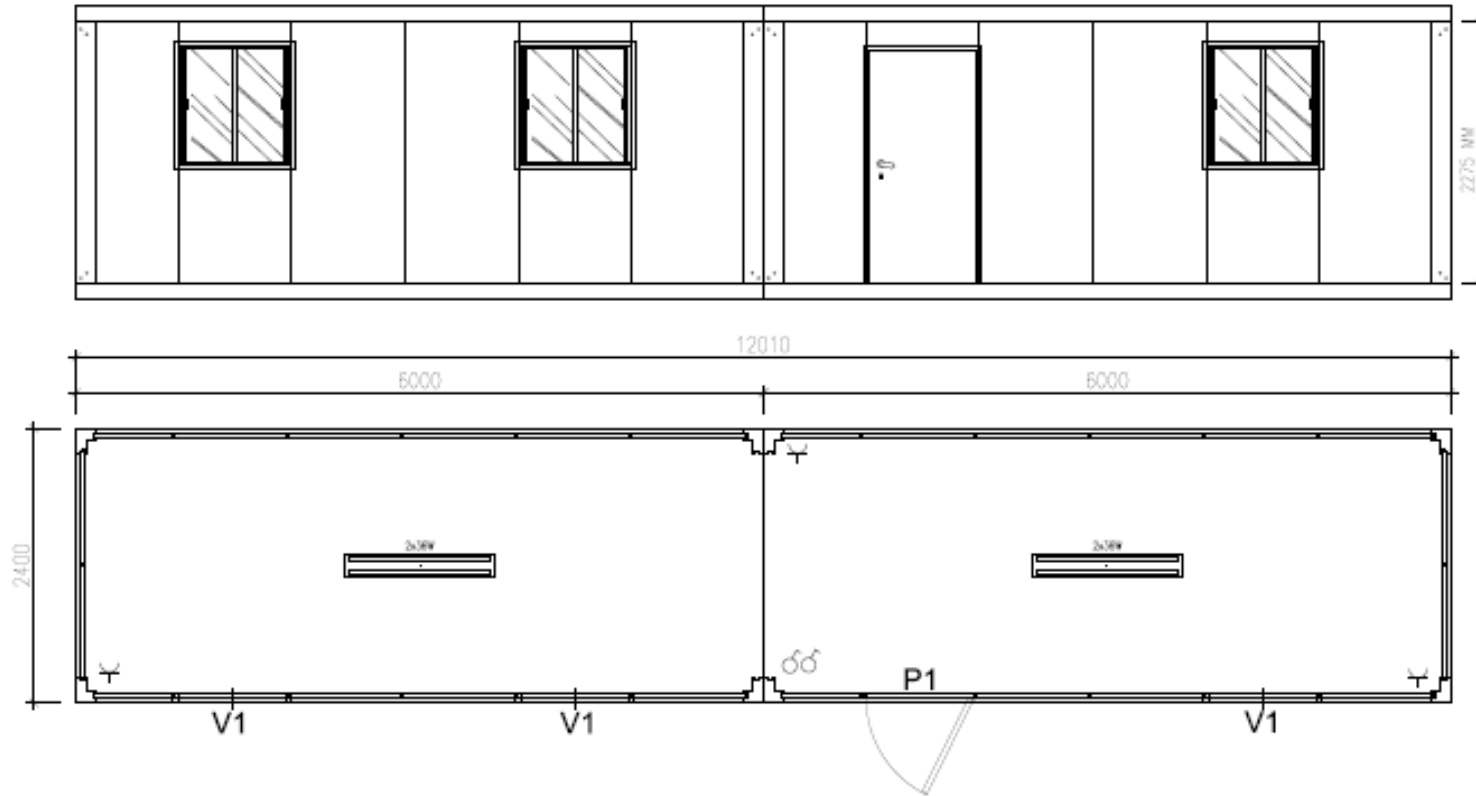
Need a quote or information ?

Find us on www.container-solution.com

Or call us at +33 (0)6 98 72 19 37 // +33 (0)6 04 19 05 53 or by email at contact@container-solution.com

Standard plans

BV5



Spécifications:

- 1 doors
- 2 interior lights
- 3 sockets
- 3 windows
- 1 fuse box
- 3 switches

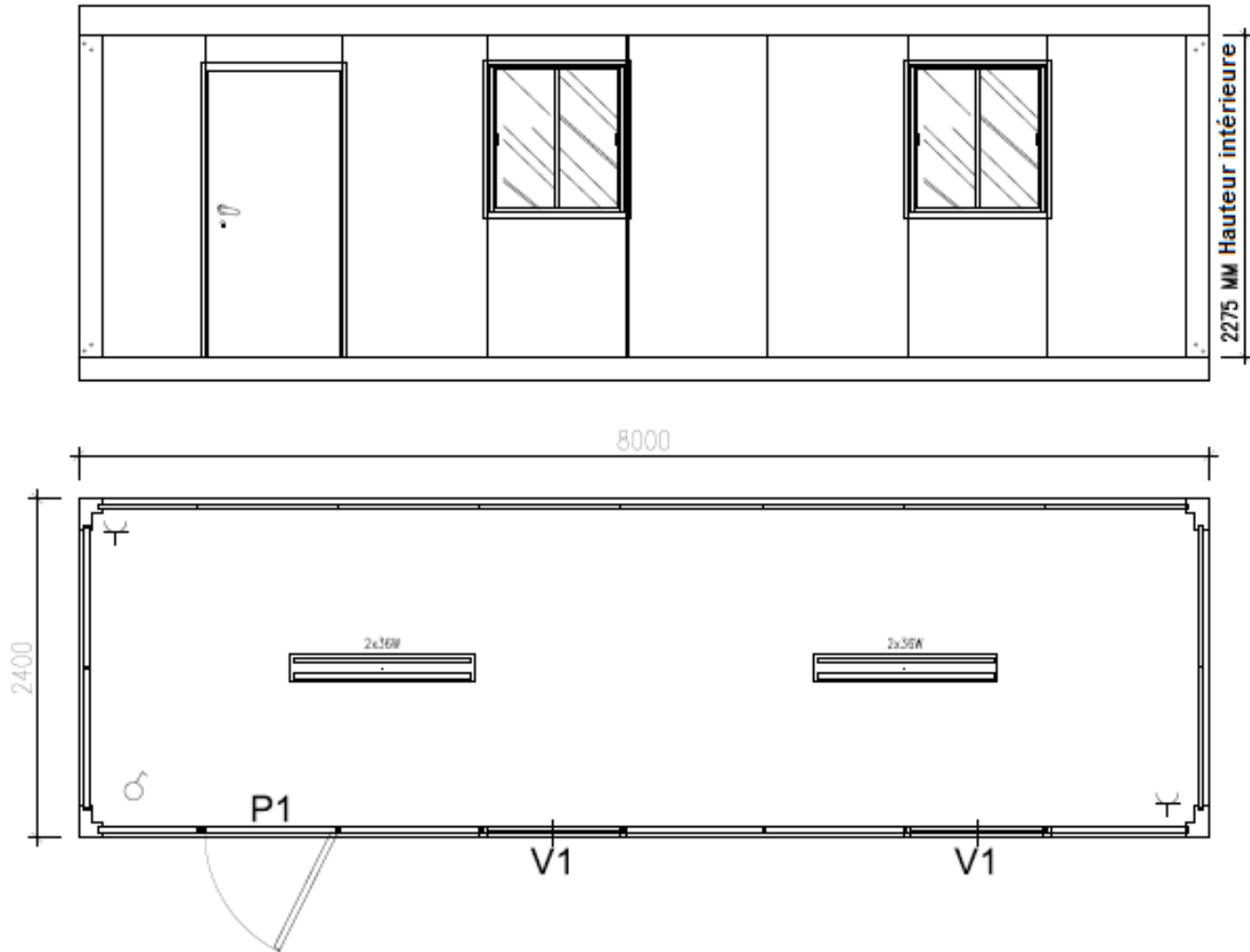
Need a quote or information ?

Find us on www.container-solution.com

Or call us at +33 (0)6 98 72 19 37 // +33 (0)6 04 19 05 53 or by email at contact@container-solution.com

Standard plans

BV6



Spécifications

- 1 door
- 2 sockets
- 2 interior lights
- 2 windows
- 1 fuse box
- 1 switch

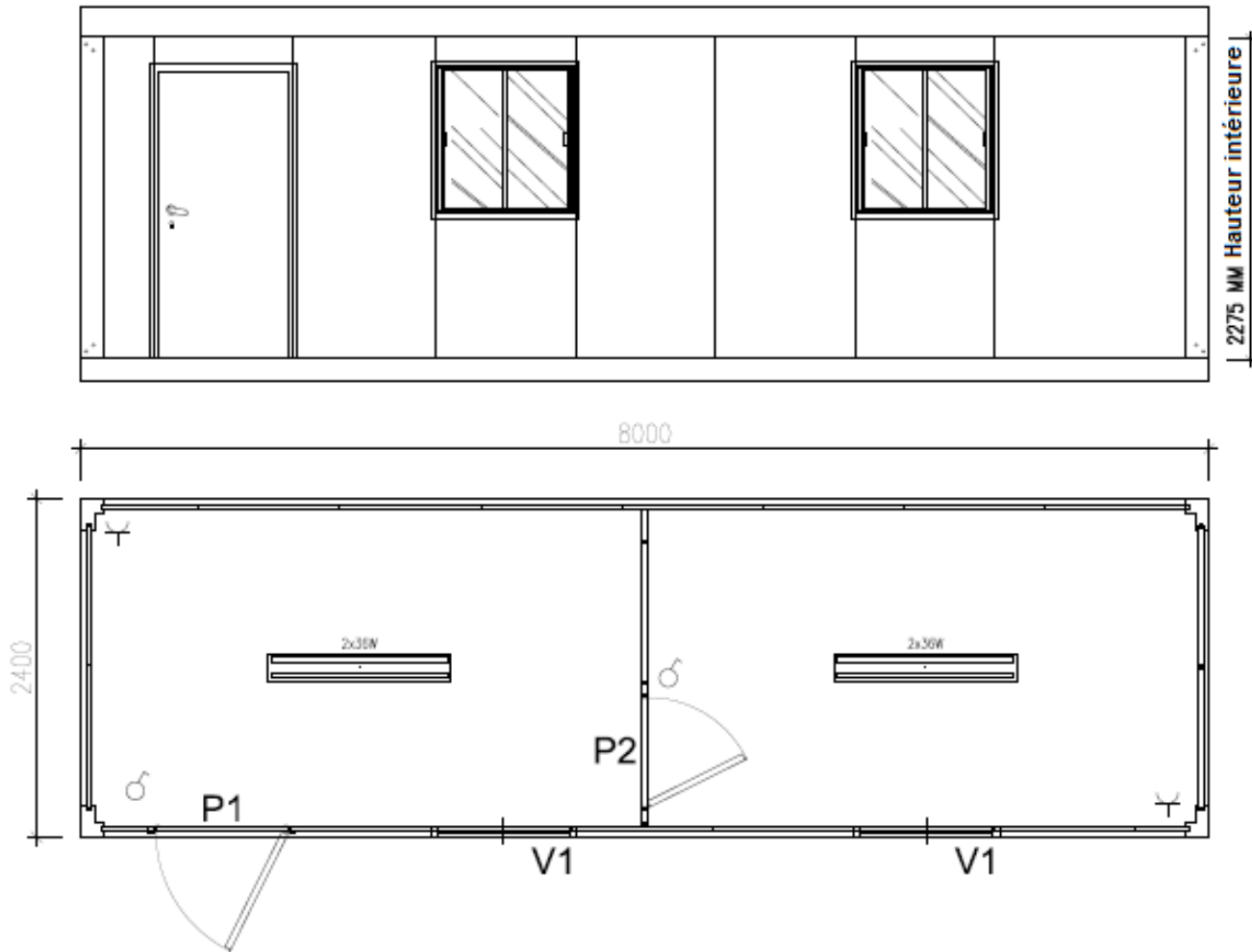
Need a quote or information ?

Find us on www.container-solution.com

Or call us at +33 (0)6 98 72 19 37 // +33 (0)6 04 19 05 53 or by email at contact@container-solution.com

Standard plans

BV7



Spécifications:

- 2 doors
- 2 sockets
- 2 interior lights
- 2 windows
- 1 fuse box
- 3 switches

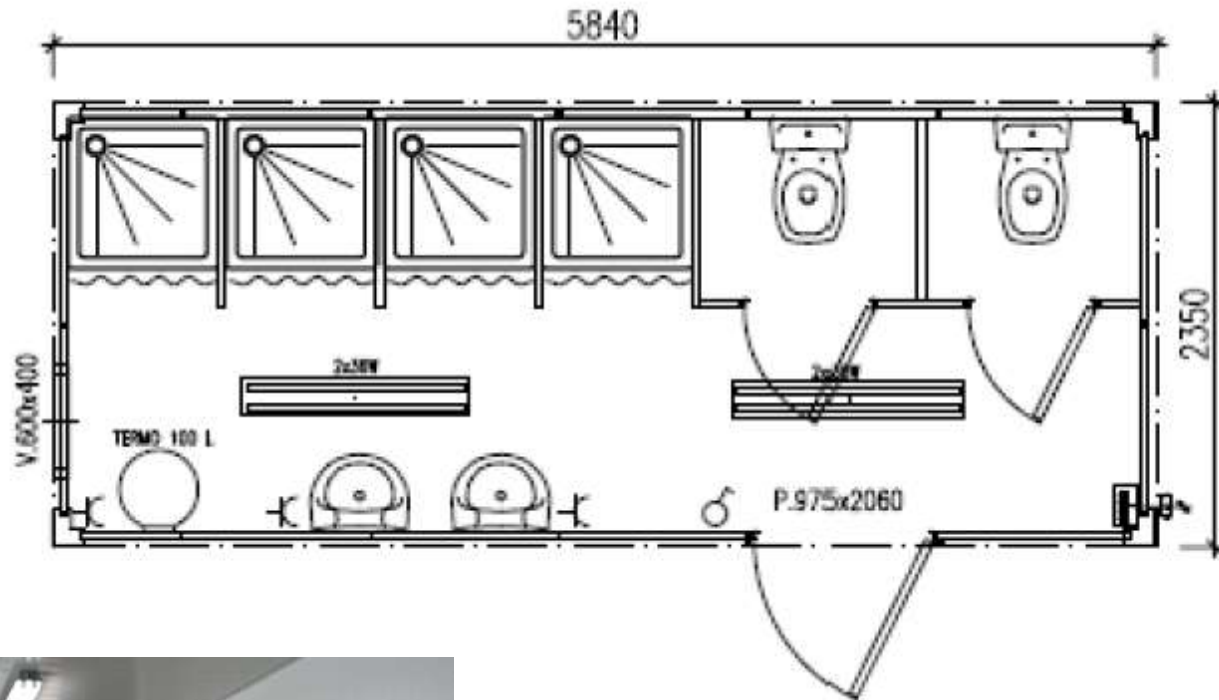
Need a quote or information ?

Find us on www.container-solution.com

Or call us at +33 (0)6 98 72 19 37 // +33 (0)6 04 19 05 53 or by email at contact@container-solution.com

Standard plans

Sanitary



This module is configured on demand: toilet, urinal, shower, washbasin.

Specifications:

- | | |
|-------------------|------------------------|
| 1 door | 2 WC |
| 1 vasistas | 4 showers |
| 2 interior lights | 2 sinks |
| 3 power outlets | 1 hot water tank 100 L |
| 1 cabinet fuse | |
| 1 switches | |



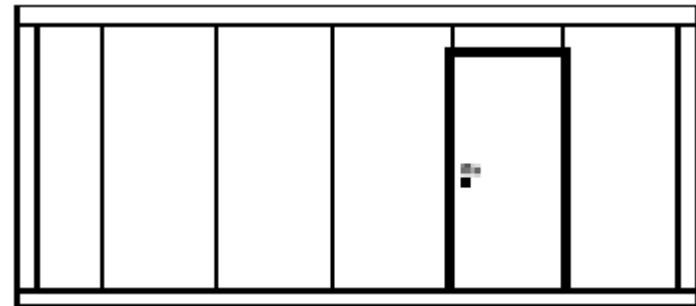
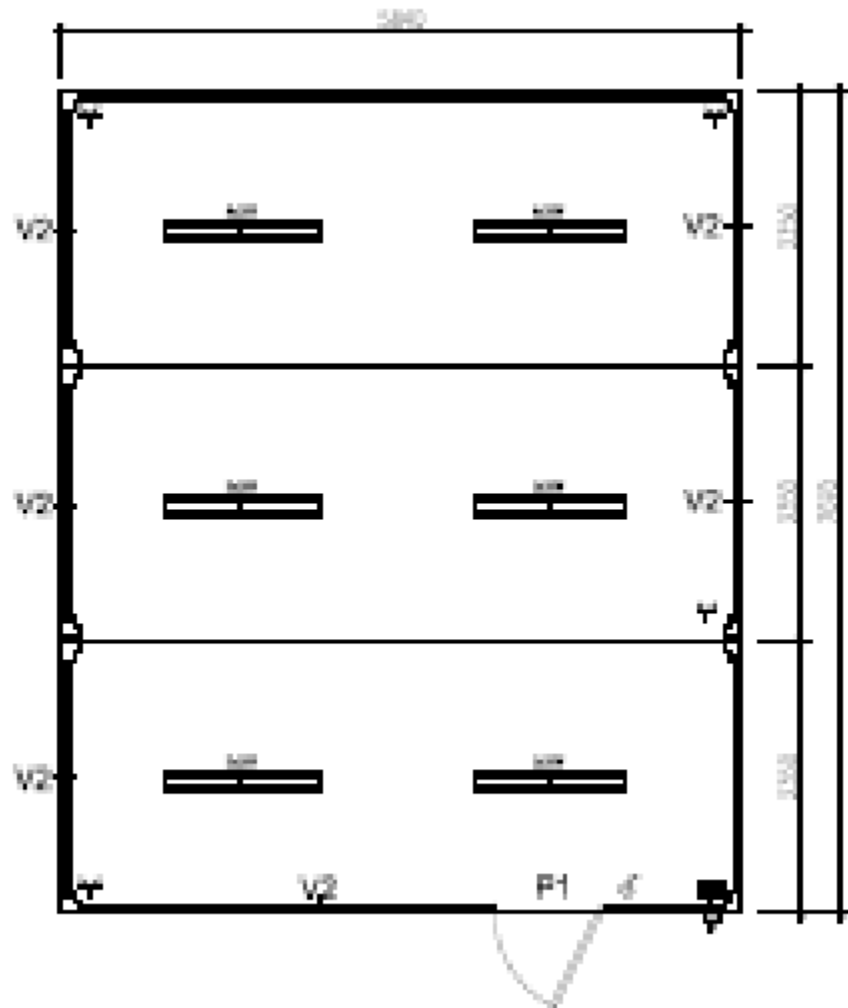
Need a quote or information ?

Find us on www.container-solution.com

Or call us at +33 (0)6 98 72 19 37 // +33 (0)6 04 19 05 53 or by email at contact@container-solution.com

Standard plans

Meeting room



Need a quote or information ?

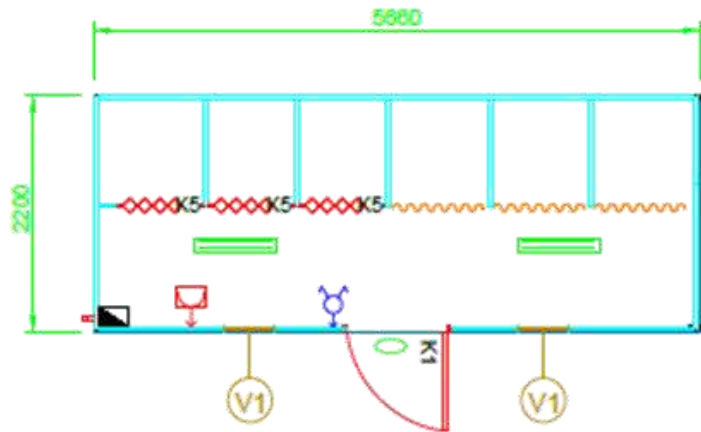
Find us on www.container-solution.com

Or call us at +33 (0)6 98 72 19 37 // +33 (0)6 04 19 05 53 or by email at contact@container-solution.com

Standard plans

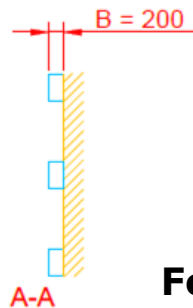
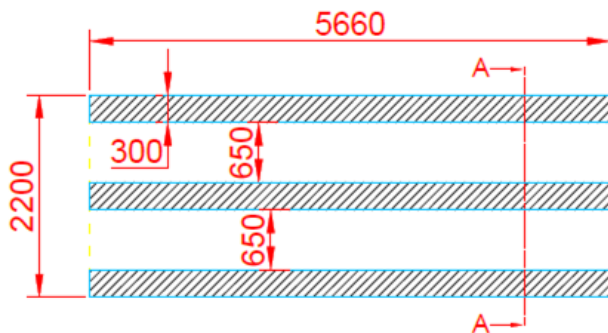
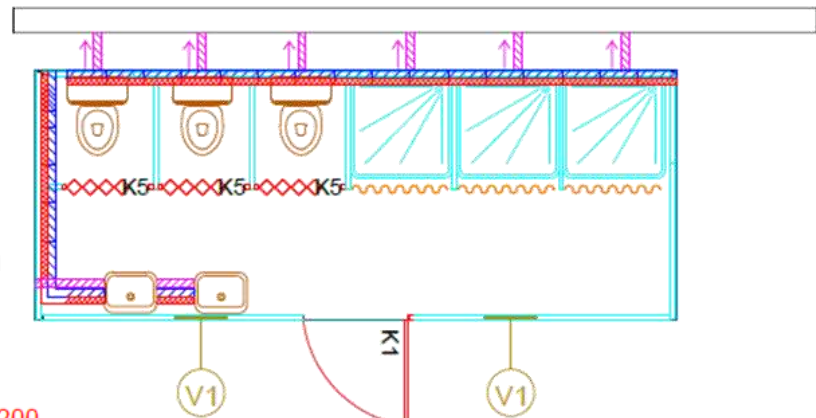
Preparing your project

With the order we provide on request foundations plans, electricity and water.



Water system

Electricity (chute)



Foundations plans

Project management

Delivery mode

- **TRUCK:** Delivery by road or sea routes accepting the trucks "Roro"
- **MARINE CONTAINER:** Delivery by boat or truck in shipping containers

Shipping containers High Cube 40 feet (or 20 feet HC)

This means allows a secure transport and easy handling.



Project management

Unloading

At the arrival of your containers, a packing list, you can identify the packages and their contents. Each module is provided with all the partitions, windows, doors, walls and roof (if necessary useful profiles for joining and airtightness, in case of combined modules).

Optional: holes for forks to load/unload and handle the modules !



Need a quote or information ?

Find us on www.container-solution.com

Or call us at +33 (0)6 98 72 19 37 // +33 (0)6 04 19 05 53 or by email at contact@container-solution.com

Project management

Erection of your modules

- **THE SITE PREPARATION**

Containers Solutions provides you foundation drawing after your order. The foundation depth must be adapted to the weight of our modules (1.1 tons average for a 5.85 x 2,35m module), to the site and to the configuration of your project (1 or 2 levels). It's the customer's responsibility to study the site conditions.

In all cases, the quality of the installation will depend on the flatness of the foundations. So, they must be checked with a laser-guided device to avoid any risks, particularly difficult to manage when it comes to combined modules or if there is a storey.



Need a quote or information ?

Find us on www.container-solution.com

Or call us at +33 (0)6 98 72 19 37 // +33 (0)6 04 19 05 53 or by email at contact@container-solution.com

Project management

Erection of your modules

• TOOLS FOR MOUNTING

The list of tools can be found in most of do-it-yourself stores (excluding installation of water pipes tool that can be sold on request)

Attached brief presentation*:



- Lapidary
- Drill / driver with bits
- Standard set of forests
- Saw 125 bells, 100, 50 and 20 mm
- Nozzle rubber hammer
- Hammer or small mass
- Retouching brushes
- Tape measures
- Pliers
- Cutter
- Welding machine for pipes of water
- Stepladders and ladders
- Extension cords
- Bubble level
- Crowbar
- Wrench
- Standard equipment for the electrician and plumber...

Lifting roof By the ISO corners



**non exhaustive list*

Need a quote or information ?

Find us on www.container-solution.com

Or call us at +33 (0)6 98 72 19 37 // +33 (0)6 04 19 05 53 or by email at contact@container-solution.com

Project management

Erection of your modules

CONDITIONS OF INSTALLATION

→ Single module assembly

It requires no special skills and can be easily accomplished by the customer subject to:

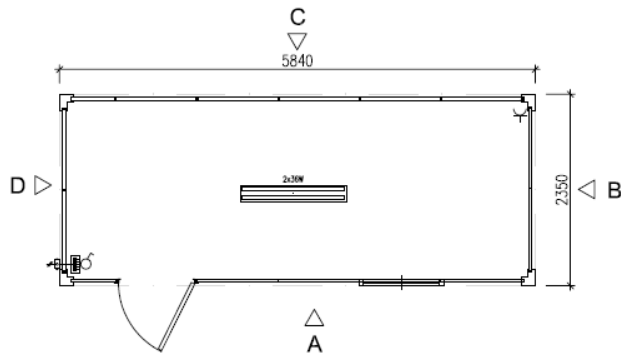
- having the right tools
- have in his team an electrician and a plumber with the basic tools (in case of module with sanitary)
- A notice will be provided upon request to properly identify the components and their assembly

→ Combined modules assembly

It requires the presence of a supervisor (provided by the factory on request and English speaker) to assist you in assembling. Moreover, Containers Solutions provides a detailed note for mounting combined modules. However, it does not replace the supervisor, editing always remaining on the responsibility of the customer.

THE ASSEMBLY TIME

They are provided for information for experienced people on the basis of single module attached:



3 people attend to the installation of one modules in half day
(including electricity)

Need a quote or information ?

Find us on www.container-solution.com

Or call us at +33 (0)6 98 72 19 37 // +33 (0)6 04 19 05 53 or by email at contact@container-solution.com

Visuals



Need a quote or information ?

Find us on www.container-solution.com

Or call us at +33 (0)6 98 72 19 37 // +33 (0)6 04 19 05 53 or by email at contact@container-solution.com

Visuals



Need a quote or information ?

Find us on www.container-solution.com

Or call us at +33 (0)6 98 72 19 37 // +33 (0)6 04 19 05 53 or by email at contact@container-solution.com

Visuals



Need a quote or information ?

Find us on www.container-solution.com

Or call us at +33 (0)6 98 72 19 37 // +33 (0)6 04 19 05 53 or by email at contact@container-solution.com

Visuals



Need a quote or information ?

Find us on www.container-solution.com

Or call us at +33 (0)6 98 72 19 37 // +33 (0)6 04 19 05 53 or by email at contact@container-solution.com

Visuals



Need a quote or information ?

Find us on www.container-solution.com

Or call us at +33 (0)6 98 72 19 37 // +33 (0)6 04 19 05 53 or by email at contact@container-solution.com

Visuals



Need a quote or information ?

Find us on www.container-solution.com

Or call us at +33 (0)6 98 72 19 37 // +33 (0)6 04 19 05 53 or by email at contact@container-solution.com

Some references



It is because your project is essential for you, that we will assist you, not as a simple service provider but as a true partner !

Therefore, we propose you a simple, competitive and reliable concept on the international market, customized to fit your needs.

The assistance of supervisors, support for mounting, through partners in many countries, including in Africa, shows our commitment and our desire to make your project a success.

*Do not hesitate to visit our website: **www.containers-solutions.com***

*And to contact us by phone **+33 (0)6 98 72 19 37 / / +33 (0)6 04 19 05 53***

*or by e-mail **contact@containers-solutions.com***

Containers Solutions Group